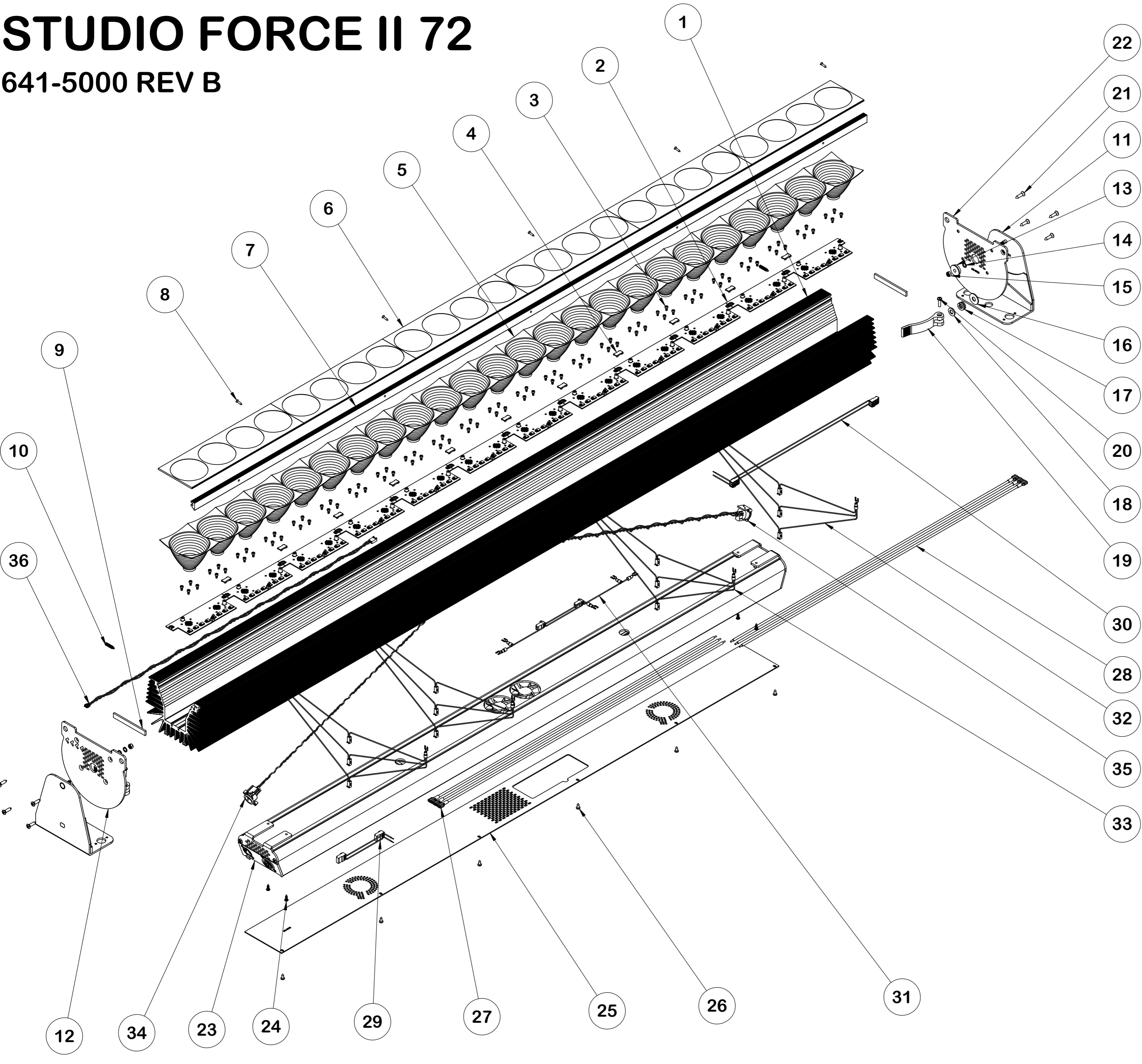


121110987654321

STUDIO FORCE II 72

641-5000 REV B

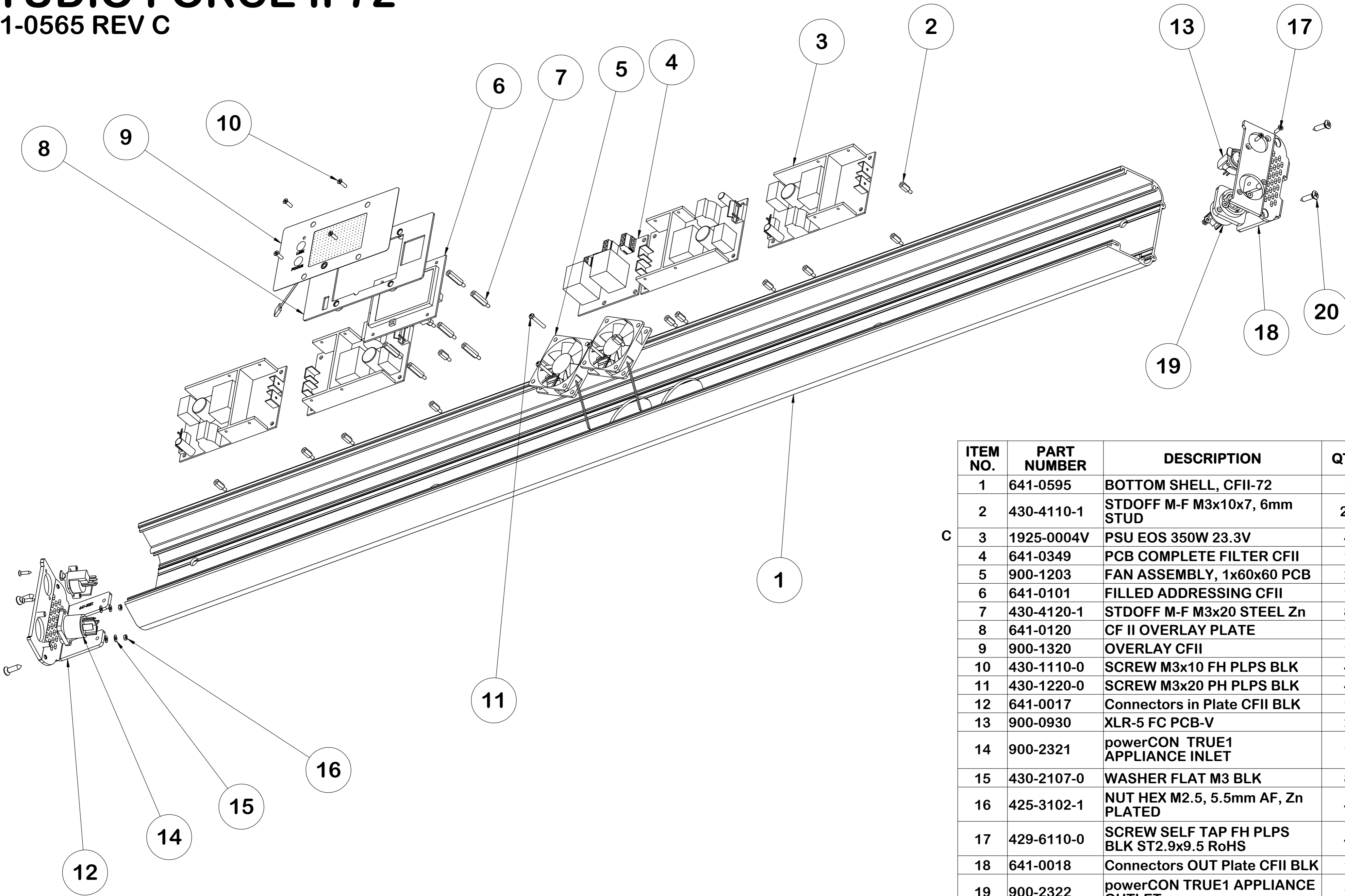


| ITEM NO. | PART NUMBER | DESCRIPTION | QTY. |
|----------|-------------|---|------|
| 1 | 641-0585 | EXTRUSION CF II MAIN BLACK ANODIZED | 1 |
| 2 | 641-0107 | PCB COMPLETE ENGINE SFII | 12 |
| 3 | 430-1406-0 | SCREW M3 X 6 SHCS BLK | 96 |
| 4 | 900-2174 | HIROSE BRIDGE (FLOATING PLUG) 3PIN | 11 |
| 5 | 641-0325 | REFLECTOR SFII | 24 |
| 6 | 641-0215 | LENS SF II | 6 |
| 7 | 641-0590 | EXTRUSION CLAMP MACHINED BLACK ANODIZED | 1 |
| 8 | 429-6110-0 | SCREW SELF TAP FH PLPS BLK ST2.9x9.5 RoHS | 5 |
| 9 | 900-0663 | GASKET NEOPRENE 1/8x3/8 PSA | 2 |
| 10 | 900-0407 | PLUNGER SPRING STUBBY #10-32UNFx0.468 BLACK | 2 |
| 11 | 622-0063 | FOOT PLATE CF CFII BLK QRTR TURN | 2 |
| 12 | 641-0014 | END PLATE CFII LEFT BLK | 1 |
| 13 | 900-0655 | BEARING F626ZZ 6mm W/FLANGE | 2 |
| 14 | 326-2138-1 | FLAT WASHER, 0.260" ID Ni | 4 |
| 15 | 450-3305-0 | HEX NUT M5, NYLOCK BLK | 2 |
| 16 | 480-2112-1 | FLAT WASHER, M8 TYPE L ZPL | 2 |
| 17 | 480-2914-4 | WASHER DOUBLE SPRING M8 | 2 |
| 18 | 480-2518-1 | WASHER FLAT M8 TYPE M | 2 |
| 19 | 622-0012 | LEVER QUICK RELEASE | 2 |
| 20 | 440-1216-0 | SCREW M4x16 PH PLPS BLK | 2 |
| 21 | 450-6719-0 | SCREW SELF TAP RAISED CS PLPS BLK ST4.8x19 | 8 |
| 22 | 641-0015 | END PLATE RIGHT BLK, CFII | 1 |
| 23 | 641-0565 | SHELL COMPLETE S/A SFII V48 | 1 |
| 24 | 306-1235-1 | SCREW #6 PH PHILIPS ZINC 7/16" LENGTH | 4 |
| 25 | 641-0110 | CLOSING PLATE w/ Q logo CFII 72 BLK | 1 |
| 26 | 435-6295-0 | SCREW SELF TAP PH PLPS BLK ST3.5x9.5 RoHS | 6 |
| 27 | 641-0400 | POWERCON TRUE 1 POWER IN TO FILTER PCB | 1 |
| 28 | 641-0410 | POWERCON TRUE 1 POWER OUT FROM FILTER PCB | 1 |
| 29 | 641-0421 | ITW 0.156 FILTER PCB TO PSU 1-2 | 1 |
| 30 | 641-0422 | ITW 0.156 FILTER PCB TO PSU 3-4 | 1 |
| 31 | 641-0440 | AUXILIARY POWER AND COMMON NEGATIVE | 1 |
| 32 | 641-0441 | PSU TO ENGINES 1-3/10-12 | 2 |
| 33 | 641-0442 | PSU TO ENGINES 4-6/7-9 | 2 |
| 34 | 641-0450 | XLR-5 INPUT TO CTRL PCB | 1 |
| 35 | 641-0460 | XLR-5 OUTPUT FROM CTRL PCB | 1 |
| 36 | 641-0470 | DATA TO 1ST ENGINE FROM CTRL PCB | 1 |

12 11 10 9 8 7 6 5 4 3 2 1

STUDIO FORCE II 72

641-0565 REV C



| ITEM NO. | PART NUMBER | DESCRIPTION | QTY. |
|----------|-------------|---|------|
| 1 | 641-0595 | BOTTOM SHELL, CFII-72 | 1 |
| 2 | 430-4110-1 | STDOFF M-F M3x10x7, 6mm STUD | 20 |
| 3 | 1925-0004V | PSU EOS 350W 23.3V | 4 |
| 4 | 641-0349 | PCB COMPLETE FILTER CFII | 1 |
| 5 | 900-1203 | FAN ASSEMBLY, 1x60x60 PCB | 2 |
| 6 | 641-0101 | FILLED ADDRESSING CFII | 1 |
| 7 | 430-4120-1 | STDOFF M-F M3x20 STEEL Zn | 8 |
| 8 | 641-0120 | CF II OVERLAY PLATE | 1 |
| 9 | 900-1320 | OVERLAY CFII | 1 |
| 10 | 430-1110-0 | SCREW M3x10 FH PLPS BLK | 4 |
| 11 | 430-1220-0 | SCREW M3x20 PH PLPS BLK | 4 |
| 12 | 641-0017 | Connectors in Plate CFII BLK | 1 |
| 13 | 900-0930 | XLR-5 FC PCB-V | 2 |
| 14 | 900-2321 | powerCON TRUE1 APPLIANCE INLET | 1 |
| 15 | 430-2107-0 | WASHER FLAT M3 BLK | 8 |
| 16 | 425-3102-1 | NUT HEX M2.5, 5.5mm AF, Zn PLATED | 4 |
| 17 | 429-6110-0 | SCREW SELF TAP FH PLPS BLK ST2.9x9.5 RoHS | 4 |
| 18 | 641-0018 | Connectors OUT Plate CFII BLK | 1 |
| 19 | 900-2322 | powerCON TRUE1 APPLIANCE OUTLET | 1 |
| 20 | 450-6119-0 | SCREW SELF TAP FH PLPS BLK 4.8X19 | 4 |